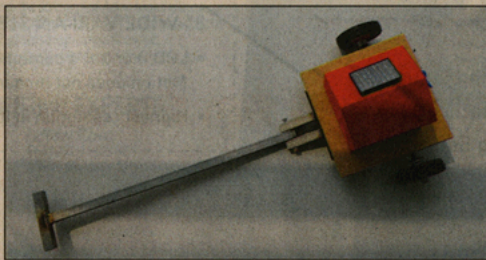


an hour @ the museum

In this weekly column, we visit museums and art spaces and highlight what you must see if you have only an hour to spare.

Explore the mobile concept of where and what home is in mixed-media exhibition Transit, which highlights four artists' response to their travels around the world. Drawing inspiration from their nomadic lifestyles, Australian artists Meredith Brice, Stephen Copland, Karee S. Dahl and Colin G. Reaney show how their constant cultural shifts have influenced the way they look at art and manipulate the media used.

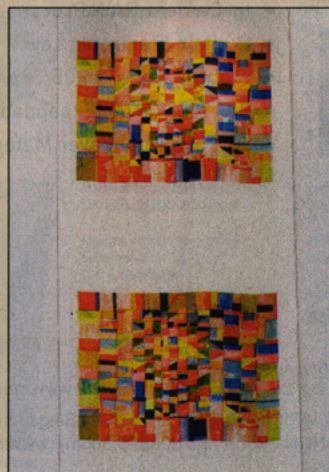
Where: The Art Gallery, National Institute of Education, Nanyang Technological University
MRT: Boon Lay **When:** Till Oct 29, 10am - 5pm (Mon - Fri), or by appointment **Admission:** Free
Tel: 6790-3540 **Info:** E-mail artgallery@nie.edu.sg
Eunice Quek



1 ARKHEION (SHELTER/HOUSE), 2009, 2010

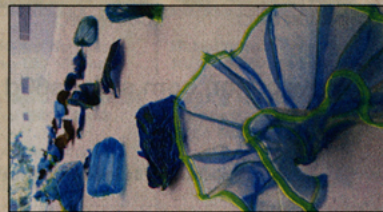
Wood, canvas, acrylic paint, by Colin G. Reaney

A former lecturer in Nanyang Technological University's visual and performing arts programme, Reaney creates works highlighting the concept of home as a temporary space that lives in one's memory. The wooden houses on the trolleys signify how one's personal space is never permanent.



2 SILK ROAD, 2009, 2010 (left)

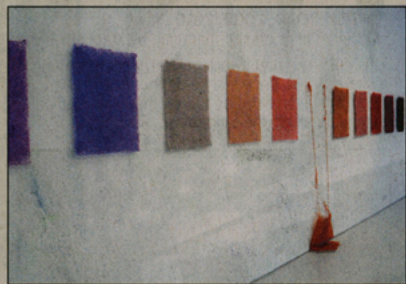
Digital print on silk shantung, by Meredith Brice
This colourful patchwork on heavy silk shantung is a signature of Brice's style as the independent curator was inspired by life on the Arabian Peninsula along the Silk Road.



3 NATURE IN TRANSIT, 2008-2010 (above)

Mixed textile, by Meredith Brice
Using the colours of the ocean, Brice works with natural sea sponge in this installation to create fluid shapes that symbolise the movement of sea creatures.

ST PHOTOS: AIDAH RAUF



4 THE DEPENDENT #4/TRAVEL, 2009 (above)

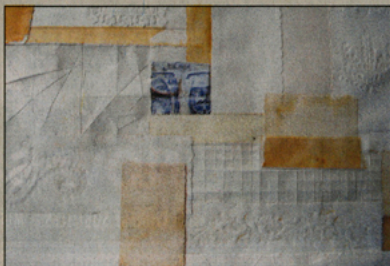
Poly-cotton thread, washable fabric glue by Karee S. Dahl

An intricately interwoven structure of threads – one part of three other works – acts as a metaphor for intertwining relationships and ideals. The glue which combines these threads together provides the anchor for staying grounded.

5 JASSIM AND THE AL FAYA CAFE, 2008 (right)

Oil on canvas by Stephen Copland

This mini-collection of 10 works shows a journey into the desert that provoked a sequential visual narrative about time, identity and place. The timeless landscape of the desert is captured in these paintings, like snapshots that focus on themes of cultural identity and diaspora.



6 PAGE FROM THE PERSIAN ALBUM... AS LONELY AS THE DESERT WIND, 2009 (left)

Mixed found papers, graphite, watercolour, acrylic, turmeric, chilli, digital print by Meredith Brice

Using unconventional material such as turmeric and chilli to colour her works, Brice patches together fragments of paper to signify the past and present.



7 TRANSCULTURAL WANDERING, 2009 (left)

Oil on board by Stephen Copland

Small paintings are arranged in a mosaic fashion to depict the fragmentation of wandering through various lands with different cultures and landscapes.